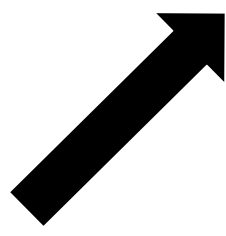
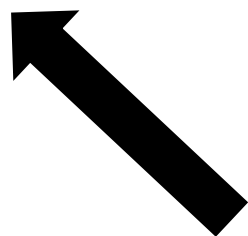
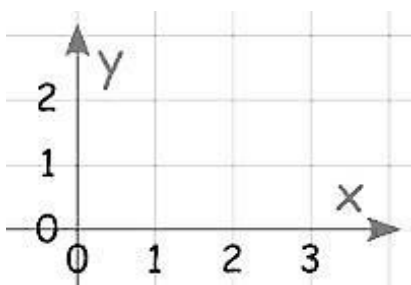
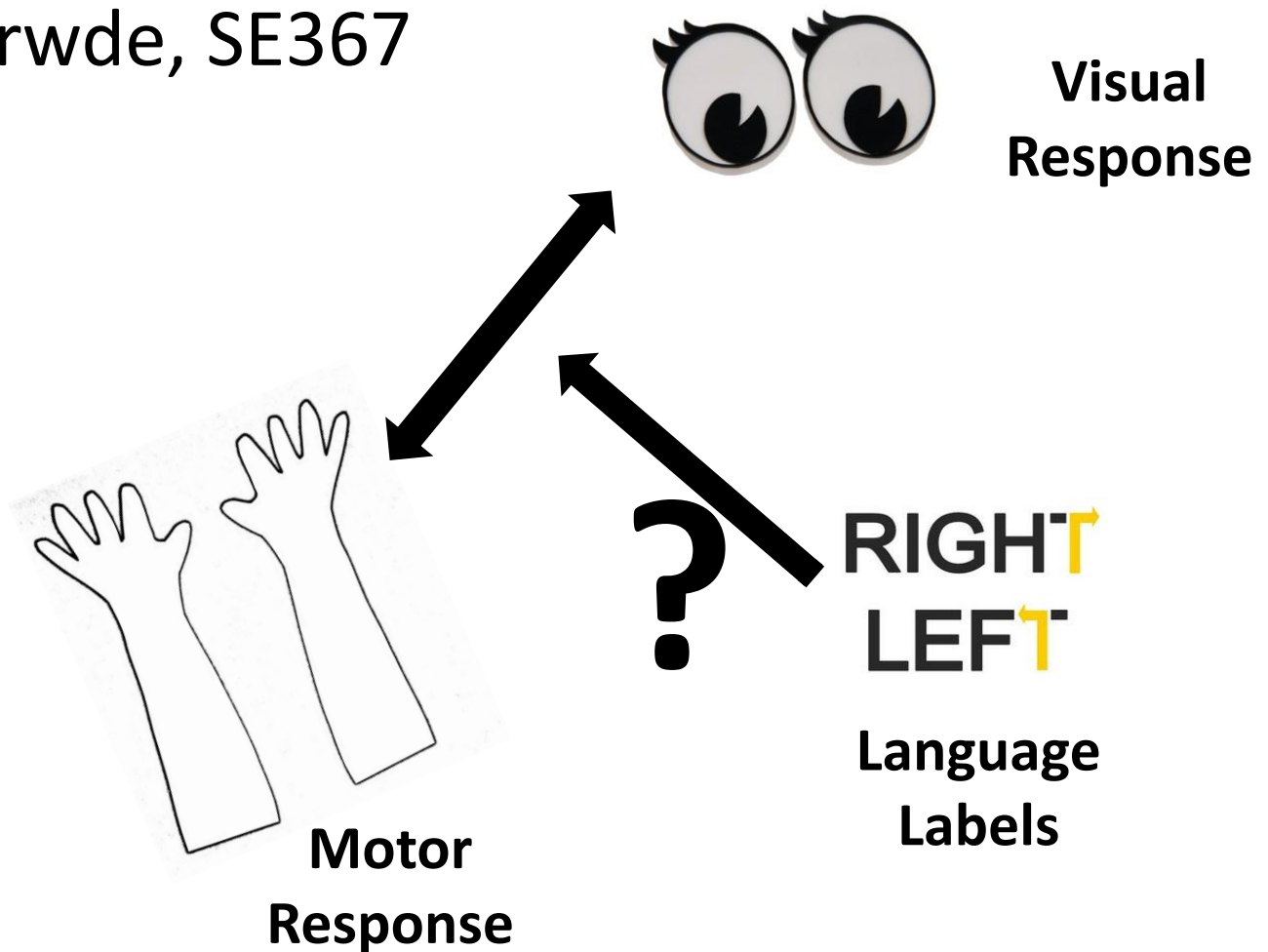


Right Left Confusion

Mentor: Amitabha Mukerjee

Nitica Sakharwde, SE367

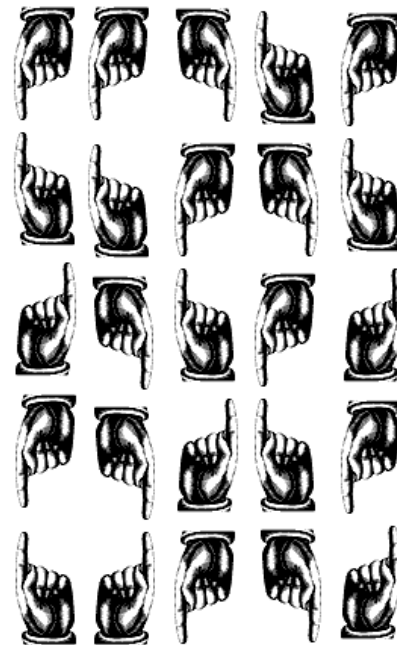
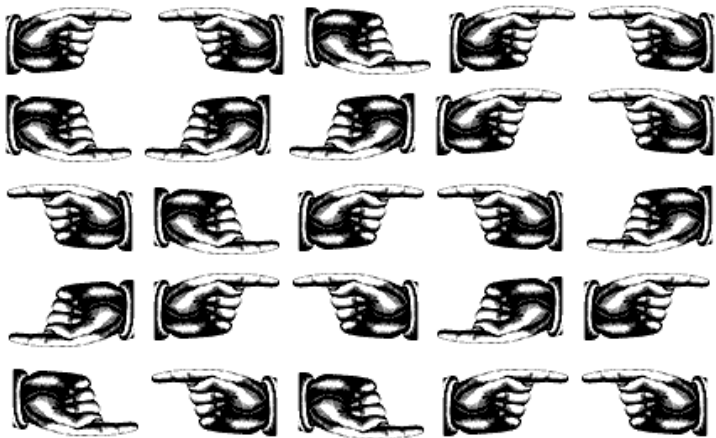


RIGHT
LEFT

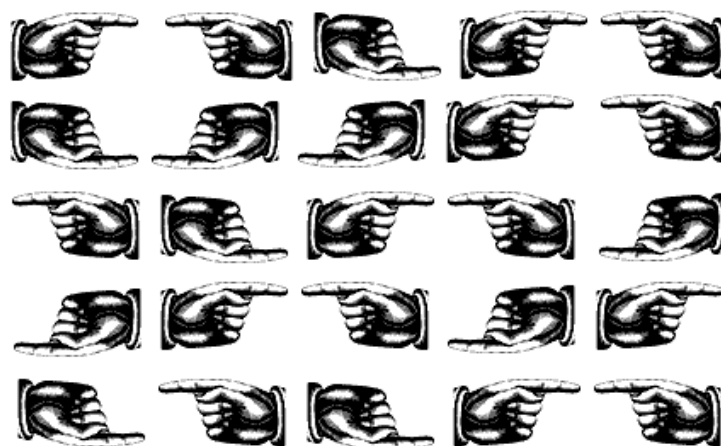
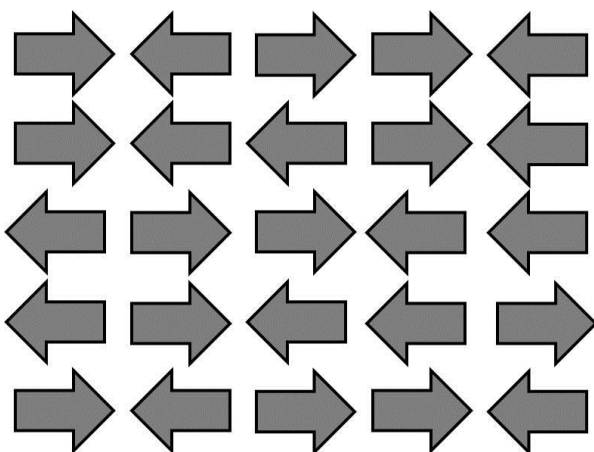
Priming

The Experiment

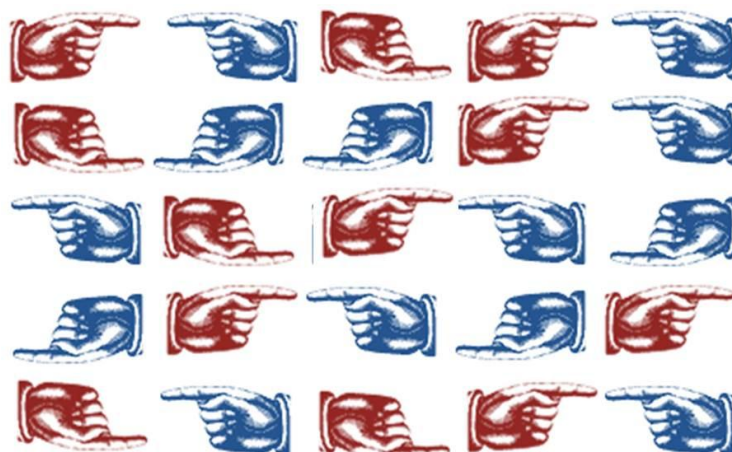
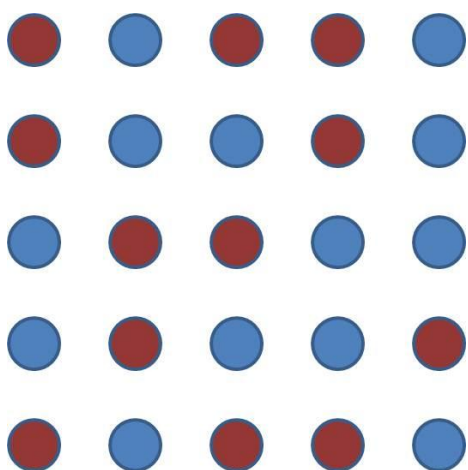
Response times



RL/UD
2.27,
0.94



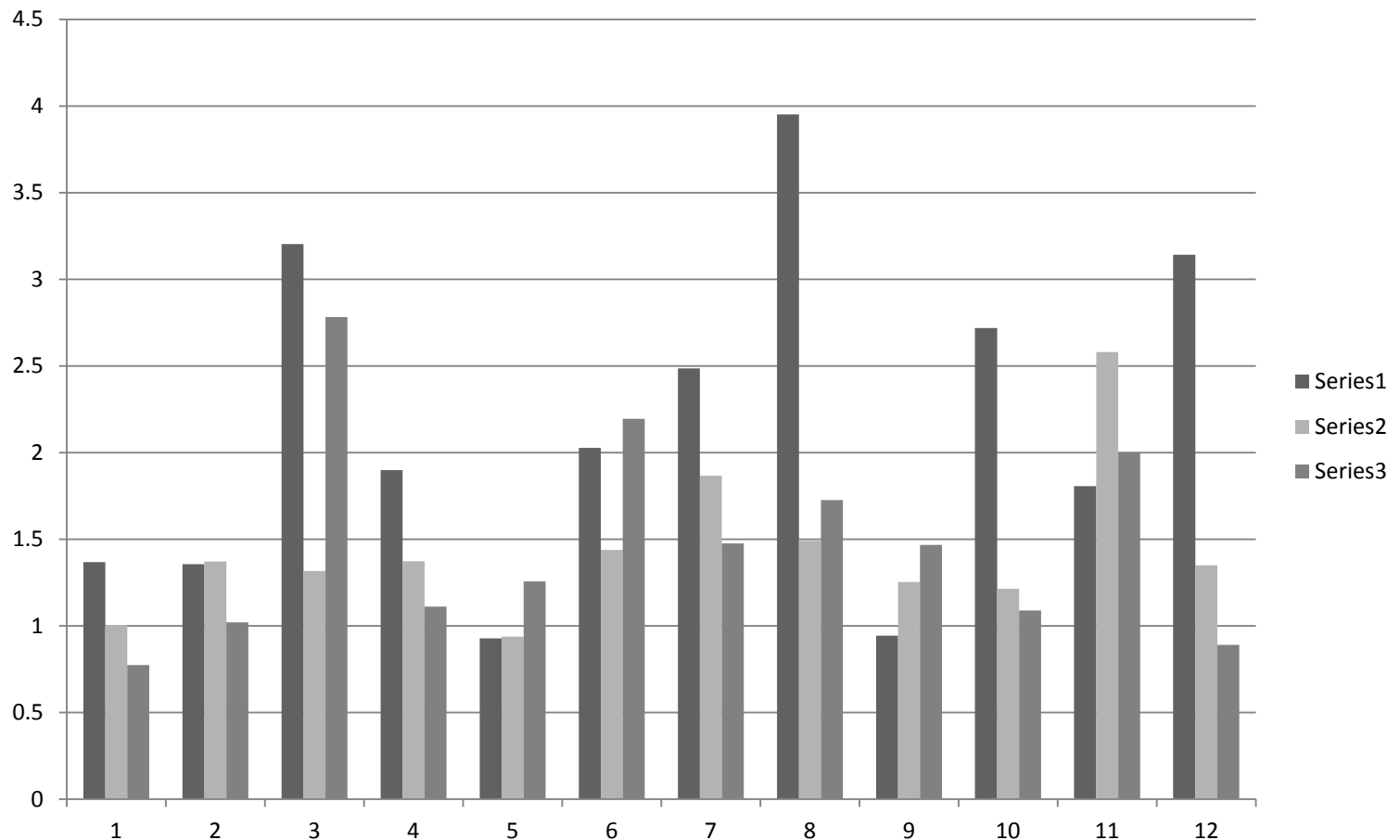
+-/UD
1.50,
0.45



color/UD
1.57,
0.58

Results

(Subjects 20(10M,10F))



RL/UD ~ 0.93 to 3.95, Mean: 2.27

+-/UD ~ 0.94 to 2.58, Mean: 1.50

Color/UD ~ 0.7 to 2.78, Mean: 1.57

Females to Males-

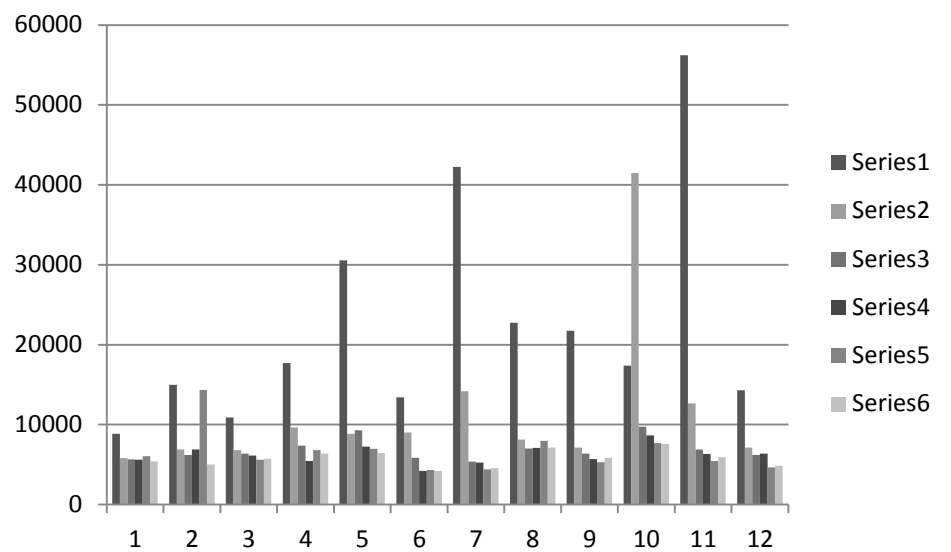
RL/UD ~ Mean: 2.51, 2.04

+-/UD ~ Mean: 1.62, 1.36

Color/UD ~ Mean: 1.52, 1.70

Experiment Two

d d b d d b b d d b
p q q p p q p q p p
p b b p p p b b p b
d q q d q d d q q d
p d d p p p d d p d
q b b q b q q b q b



Ratios of means-

pq, db	1.44
db	1.73
pb, dq	0.71
pd, qb	0.56

References

- [1] Auer, Tibor, et al. "Right-left discrimination is related to the right hemisphere." *Laterality* 13.5 (2008): 427-438.
- [2] Brandt, Jason, and William Mackavey. "Left-right confusion and the perception of bilateral symmetry." *International Journal of Neuroscience* 12.2 (1981): 87-94.
- [3] Rigal, Robert. "Right-left orientation: Development of correct use of right and left terms." *Perceptual and motor skills* 79.3 (1994): 1259-1278.
- [4] Snyder, Thomas J. "Self-rated right-left confusability and objectively measured right-left discrimination." *Developmental neuropsychology* 7.2 (1991): 219-230.